

stormsm

S T O R I E S

2010 – 2011 Season Info

<http://syndication.pathfire.com/shows>

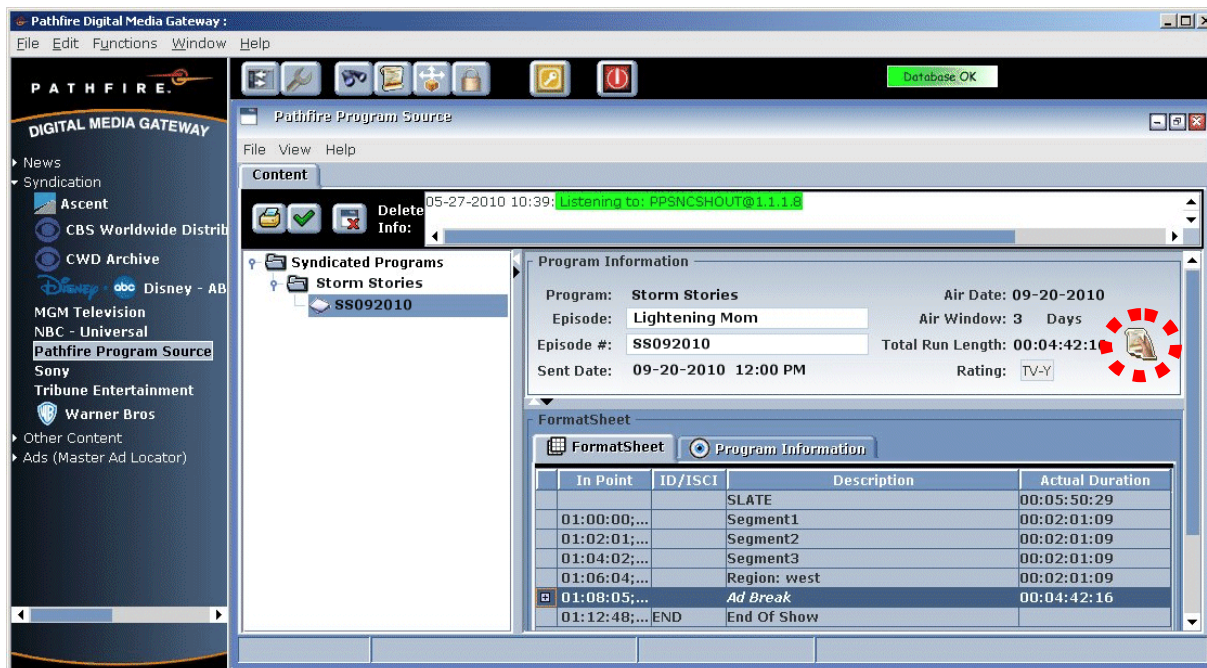
LITTON
ENTERTAINMENT

843-883-5060

To streamline our services and provide content that is easily accessible when needed, LITTON Entertainment will begin delivering the following show via the Pathfire Digital Media Gateway (“DMG”) Platform: **Storm Stories**. This content will be available on your Pathfire server via Galaxy 18 no later than 4:00pm EST two days prior to airdate beginning Sept 16, 2010. This show is available in SD and will pitch daily Monday - Friday.

Locating/Viewing Content

1. Log in to DMG using your assigned username and password.
2. In the Content Provider navigation pane shown on the left, click the arrow for **Syndication**.
3. From the expanded list, double-click on **Pathfire Program Source**.
4. In the list of shows displayed, double-click on the folder for **Storm Stories**.
5. To view the format sheet, double-click on the desired show number (e.g., **SSXXX**).



6. To dub the show, click the **Drag Format Sheet icon** and drag/drop the icon onto the desired destination (play-to-air server, VTR, etc.) shown under “DESTINATIONS” in the lower left-corner of the window. (NOTE: If you have automation software in place, this step is not applicable.)

Who do I contact with questions?

- DG/Pathfire: Angel Gabriel 646.344.3464 - SyndicationClientSvc-NYC@dgfastchannel.com
- LITTON Entertainment: 843.883.5060
 - Courtney Parnell (cparnell@litton.tv) or Sara Krajewski (sara@litton.tv)
- For any questions regarding Pathfire equipment: 888.345.0489 - support@pathfire.com

Storm Stories
 Schedule 2010-2011 Season
 update 8.27.10



Air Date	Episode #	Title
9/27/2010	SS084	Animal: Avalanche Dog
9/28/2010	SS097	SRI LANKA TSUNAMI
9/29/2010	SS050	Colorado Blizzard Rescue
9/30/2010	SS107	Hurricane Rita
10/1/2010	SS101	Davis Lake, OR Fire
10/4/2010	SS122	TX Wildfires
10/5/2010	SS034	Siren, WI Tornado
10/6/2010	CG1004	HURRICANE RITA
10/7/2010	SS082	La Conchita, CA Mudslide
10/8/2010	SS008	Blown From Her Arms
10/11/2010	SS 030	Hurricane Darby
10/12/2010	SS071	Animal Storm Stories/Hurricane Charley
10/13/2010	SS080	Animal: Redding, CA Fire
10/14/2010	SS116	January Georgia Tornadoes
10/15/2010	SS114	New Hampshire Flood
10/18/2010	CG1012	BLIZZARD OF 1978
10/19/2010	SS047	California Wildfires
10/20/2010	SS062	TX Border Flash Flood
10/21/2010	SS065	Cape Cod Boat Rescue
10/22/2010	SS085	Survival: Sierra Hiker Rescue
10/25/2010	SS042	Tornado Outbreak of '74
10/26/2010	SS058	'95 VA Floods
10/27/2010	SS078	Animal: Allison HSPCA
10/28/2010	SS112	Utah Avalanche
10/29/2010	SS050	Colorado Blizzard Rescue
11/1/2010	SS047	California Wildfires
11/2/2010	SS052	D Day Anniversay
11/3/2010	SS063	Hurricane Hazel
11/4/2010	SS104	Oregon Fishing Trip
11/5/2010	CG1004	HURRICANE RITA
11/8/2010	ARP03	BLIZZARD OF 1996 PART 1
11/9/2010	ARP04	BLIZZARD OF 1996 PART 2
11/10/2010	SS051	California Mudslides
11/11/2010	SS024	Hurricane Floyd
11/12/2010	SS070	Roanoke Tornado
11/15/2010	SS074	Animal: Ivan Alabama Zoo
11/16/2010	CG1012	BLIZZARD OF 1978
11/17/2010	SS049	Houston Flash Flood
11/18/2010	SS102	Chandler, MN F-5
11/19/2010	SS110	November Tornadoes
11/22/2010	SS080	Animal: Redding, CA Fire

11/23/2010	SS114	New Hampshire Flood
11/24/2010	SS050	Colorado Blizzard Rescue
11/25/2010	SS020	Belvidere Tornado
11/26/2010	SS065	Cape Cod Boat Rescue
11/29/2010	SS064	1979 Election Blizzard: The Politics of Snow
11/30/2010	SS073	Covering Charley
12/1/2010	SS047	California Wildfires
12/2/2010	SS081	Hurricane Ivan
12/3/2010	CG1013	LOST AT SEA
12/6/2010	ARP06	FIRE AND LIGHTNING REPACK
12/7/2010	SS056	Arctic Blast
12/8/2010	SS084	Animal: Avalanche Dog
12/9/2010	SS090	Ivan Tornado
12/10/2010	SS018	Blowdown
12/13/2010	SS066	Mulvane Tornado
12/14/2010	SS060	Minnesota Windstorm
12/15/2010	SS115	Laguna Landslide
12/16/2010	SS102	Chandler, MN F-5
12/17/2010	SS114	New Hampshire Flood
12/20/2010	SS059	Baltimore Water Taxi Ax
12/21/2010	SS089	Hurricane Hunter Hurricane Opal
12/22/2010	SS 030	Hurricane Darby
12/23/2010	SS083	Storm Kidney Transplant
12/24/2010	CG1006	TRAGEDY AT SEA
12/27/2010	SS019	Cerro Grande Fire
12/28/2010	ARP07	DANGEROUS MANEUVERS
12/29/2010	SS096	THAILAND TSUNAMI
12/30/2010	SS071	Animal Storm Stories/Hurricane Charley
12/31/2010	SS080	BLIZZARD OF 1978

Storm Stories
Schedule 2010-2011 Season
update 5.12.10





Integration Timing Format

2010-2011

			IN	LENGTH	OUT
SEGMENT 1					
BREAK 1				2:07	
NATIONAL BILLBOARD	:05				
1A	:30	NATIONAL BLACK			
1B	:30	NATIONAL BLACK			
1C	:30	NATIONAL BLACK			
1D	:30	NATIONAL BLACK			
SEGMENT 2					
BREAK 2				2:32	
2A	:30	NATIONAL BLACK			
2B	:30	NATIONAL BLACK			
2C	:30	LOCAL BLACK			
2E	:30	LOCAL BLACK			
2F	:30	LOCAL BLACK			
SEGMENT 3					
CC BUMPER	:03				
NATIONAL BLACK	:10	NATIONAL ID			
NATIONAL BLACK	:10	NATIONAL ID			
NATIONAL BLACK	:10	NATIONAL ID			
BREAK 3				2:32	
3A	:30	NATIONAL BLACK			
3B	:30	LOCAL BLACK			
3C	:30	LOCAL BLACK			
3D	:30	LOCAL BLACK			
3E	:30	LOCAL BLACK			
CREDITS				TRT=	28:30



CONTACT INFORMATION
2010/2011 Season

FOR PROGRAMMING INFORMATION, contact:

Sara Krajewski
Litton Entertainment
884 Allbritton Road, Suite 200
Mt. Pleasant, SC 29464
Phone: (843) 883-5060
Fax: (843) 883-9957
E-mail: sara@litton.tv

FOR DISTRIBUTION INFORMATION, contact:

Angel Gabriel
DG FastChannel
600 Third Avenue
SC Level
New York, NY 10016
Phone: 646.344.3464
E-mail: SyndicationClientSvcs-NYC@dghostchannel.com

FOR SATELLITE TRANSMISSION DIFFICULTIES, contact:

Pathfire Support
Phone: (888) 345-0489
E-mail: PathfireSupport@pathfire.com

FOR PROMOTIONAL INFORMATION, contact:

Sara Krajewski or Andrew Tew
Litton Entertainment
884 Allbritton Road, Suite 200
Mt. Pleasant, SC 29464
Phone: (843) 883-5060
Fax: (843) 883-9957
E-mail: sara@litton.tv
E-mail: atew@litton.tv

SEND USAGE TO:

Litton Entertainment
Attn: Usage
884 Allbritton Road, Suite 200
Mt. Pleasant, SC 29464
Fax: (843) 883-9957



Fact Sheet
2010/2011 Season

SHOW TITLE: Storm Stories

DISTRIBUTED BY: Litton Entertainment

SERVICED BY: DG FASTCHANNEL

START DATE: Week of September 27, 2010

LENGTH: 28:30 per episode

COMMERCIAL TIME: 7 Minutes per episode

FORMAT: Each episode will have 4 segments and 3 commercial breaks.
Closed Captioned

PROGRAM FEEDS: This content will be available on your Pathfire server via Galaxy 18 no later than 4:00pm EST two days prior to airdate beginning Sept 16, 2010. This show is available in SD and will pitch daily Monday - Friday.

SATELLITE UPLINK: Pathfire Support
(888) 345-0489

NIELSEN CODE: Storm Stories



AFFIDAVIT INFORMATION

Please regularly report to Litton Entertainment all broadcasts, episodic and commercial pre-emptions and scheduled make-goods for this series. Affidavits of performance for each Litton Entertainment program licensed to your station must be returned within ten days of the end of each broadcast month.

Please note that all affidavits of performance must be signed and dated by a station representative.

Please return affidavits to:

Litton Entertainment
Attn: Usage
884 Allbritton Blvd. Suite 200
Mount Pleasant, SC 29464
Facsimile (843) 883-9957
e-mail: atew@litton.tv (Andrew Tew)

PRE-EMPTIONS

Please notify Litton Entertainment of all program pre-emptions (scheduled and unscheduled) as soon as possible.